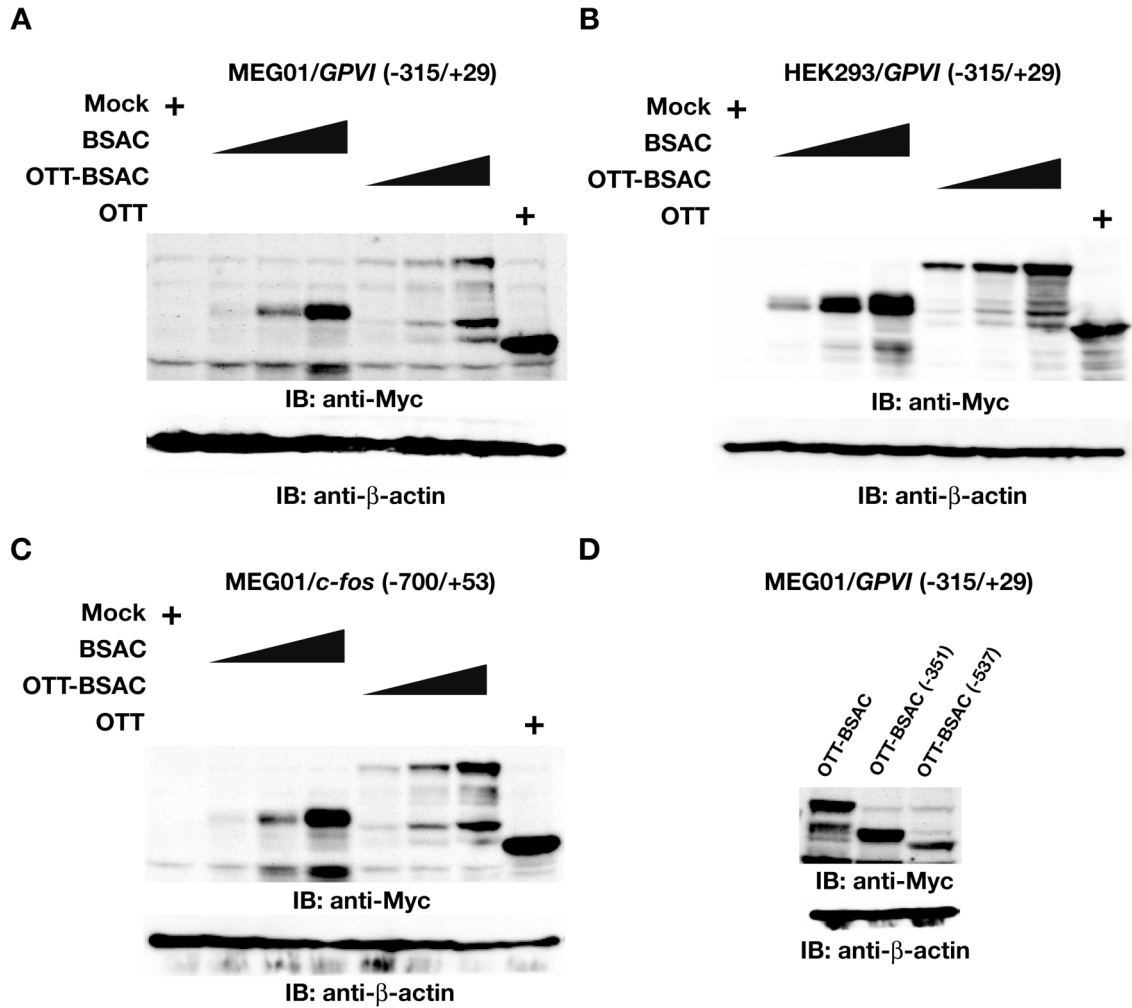


Sawada, Supplemental Figure S1



Supplemental Fig. S1. (A to D), MEG-01 cells were transfected with increasing amounts of the indicated expression vectors along with pGL3-*GPVI* (-315/+29) or pGL3-*c-fos* (-700/+53) as in Fig. 1. The expression levels of the transfected proteins were detected by immunoblotting with anti-Myc antibody using whole cell lysates (the upper panels). The equal loading of the lysates was verified by immunoblotting with anti- β -actin antibody (the lower panels).